

INTRODUCTION

The computing and visualization environment MATLAB created by the MathWorks company is one of the most important systems of this kind all over the world. At present it belongs together with its toolboxes to standard software tools used both for educational and research purposes and it creates the integration environment for different research disciplines. All information are available on address

[HTTP://WWW.MATHWORKS.COM](http://www.mathworks.com)
[HTTP://WWW.HUMUSOFT.CZ](http://www.humusoft.cz)

The communication between users of this system is able through the CSMUG discussion group (Czech and Slovak Matlab User Group) with detail information available on address

[HTTP://DSP.VSCHT.CZ/CSMUG_EN.HTML](http://dsp.vscht.cz/csmug_en.html)

At present there is 249 registered members of this group belonging to 32 universities and research institutes. The most active of them include the Czech Technical University, Czech Academy of Sciences, Brno University of Technology, Institute of Chemical Technology in Prague and the Charles University. Discussion is possible for members only but it is possible to sign for anybody sending an e-mail to the address

listserv@vscht.cz

with its body in the form: *subscribe csmug* or *unsubscribe csmug*. This address can be used to obtain further information as well sending command *help* in the message body. The communication is able sending questions and answers to address

csmug@vscht.cz

At the end it is necessary to express thanks to all active participants of the International Conference on Technical Computing Prague 2005 for their contributions.

Prof. Ing. Aleš Procházka, CSc
Department of Computing and Control Engineering ICT Prague

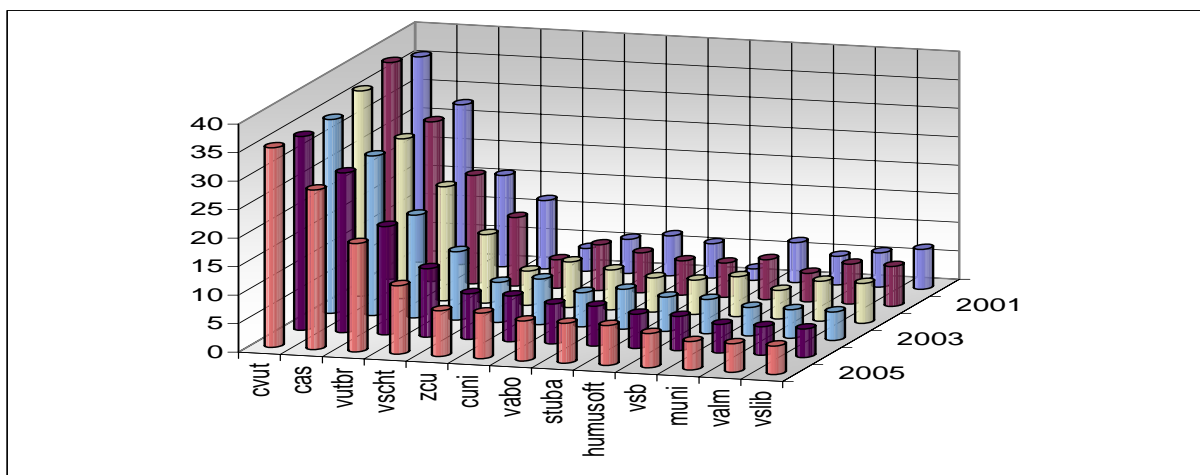


Figure 1: The development of the number of CSMUG members during the period from 2000 up to 2005 (developed by Ing. Aleš Pavelka, the master of the discussion group)