

# CONFERENCE TECHNICAL COMPUTING PRAGUE 2007

*A. Procházka, A. Pavelka*

Institute of Chemical Technology in Prague, Dept of Computing and Control Engineering

The programming and visualization environment MATLAB created by the MathWorks company established in 1984 is one of the most important mathematical computing systems all over the world. At present it belongs together with its toolboxes among standard software tools used both for educational and research purposes and it creates the integration environment for different research disciplines. Founders of the company Jack Little and Cleve Moler combined their expertise in mathematics, engineering, and computer science to develop MATLAB. During the following years the environment has been extended by many toolboxes including block oriented system SIMULINK and modern possibilities of distributed computing. Detail information are available on address

[HTTP://WWW.MATHWORKS.COM](http://www.mathworks.com)  
[HTTP://WWW.HUMUSOFT.CZ](http://www.humusoft.cz)

The communication between users of this system is able through the CSMUG discussion group (Czech and Slovak Matlab User Group) with detail information available on address

[HTTP://DSP.VSCHT.CZ/CSMUG\\_CZ.HTML](http://dsp.vscht.cz/csmug_cz.html)

At present there is 174 registered members of this group belonging to 32 universities and research institutes. The most active of them include the Czech Technical University, Czech Academy of Sciences, Institute of Chemical Technology in Prague and the Charles University. Discussion is allowed for members only but it is possible to sign for anybody using web address

[HTTP://LISTSERV.VSCHT.CZ/MAILMAN/LISTINFO/CSMUG](http://listserv.vscht.cz/mailman/listinfo/csmug)

The communication between group members is possible sending questions and answers to address

*csmug@vscht.cz*

MATLAB users meet regularly on the international scientific conference with its present name *Technical Computing* to present results of research work and pedagogical activities using this environment. All contributions collected during last 8 years are available for anybody from

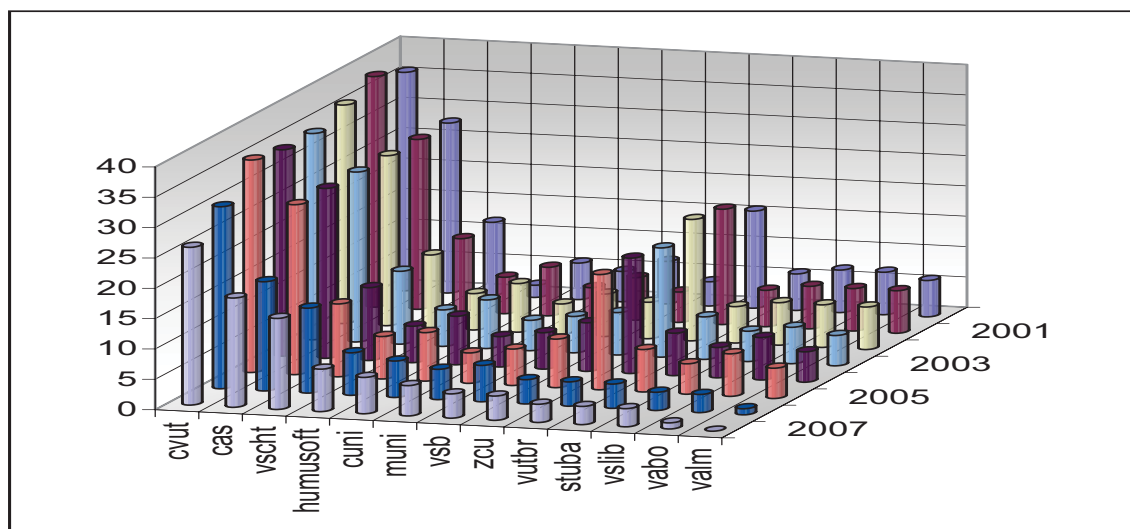


Figure 1: The development of the number of CSMUG members during years 2000 - 2007

Table 1: STATISTICS OF THE SUCCESSFULLY DOWNLOADED PAPERS FROM THE WWW SERVER OF THE TECHNICAL COMPUTING (MATLAB) CONFERENCE DURING THE PERIOD 1/10/2006 - 30/9/2007

<i>Year of the Conference</i>	<i>Number of Contributions in Conference Proceedings</i>	<i>Number of Papers Downloaded</i>
1999	42	4745
2000	67	8568
2001	70	10387
2002	105	11234
2003	105	13719
2004	100	14079
2005	128	29895
2006	108	13609
Total	725	106236

Table 2: SUMMARY OF THE MOST FREQUENTLY DOWNLOADED PAPERS FROM THE WWW SERVER OF THE TECHNICAL COMPUTING (MATLAB) CONFERENCE DURING THE PERIOD 1/10/2006 - 30/9/2007

<i>Number of Downloads</i>	<i>Contribution</i>	<i>Number of Downloads</i>	<i>Contribution</i>
2173	matlab04/kratochvil.pdf	459	matlab06/cidl_hyncica.pdf
1955	matlab00/ondracka.pdf	446	matlab05/masar2.pdf
1214	matlab05/brandt.pdf	422	matlab01/msal.pdf
820	matlab05/ondera.pdf	421	matlab05/thursky.pdf
683	matlab05/achtenova.pdf	420	matlab05/grobelny.pdf
663	matlab05/potuckova.pdf	410	matlab01/komarek.pdf
612	matlab01/eisenst.pdf	406	matlab04/pavelka.pdf
600	matlab05/vojtesek.pdf	405	matlab05/gavlasova.pdf
588	matlab05/mudrova.pdf	403	matlab05/foltin2.pdf
520	matlab05/pelant.pdf	399	matlab05/kahanek.pdf
513	matlab05/steinbauer.pdf	382	matlab04/dusek_jaroslav.pdf
503	matlab05/grepl.pdf	377	matlab04/kubicek.pdf
487	matlab00/zapl.pdf	373	matlab01/bobal.pdf

the address of the discussion group. During the last year 106 236 papers have been successfully downloaded from this address with the time distribution of papers summarized in Tab. 1 and identification of the most frequently downloaded papers given in Tab. 2.

At the end it is necessary to express thanks to all active participants of the International Conference on Technical Computing Prague 2007 for contributions presenting their research and educational work. Special thanks belongs also to the HUMUSOFT company representing the MathWorks Company in the Middle Europe for regular organization of conferences devoted to the interdisciplinary MATLAB computing environment.