

INTRODUCTION

The computing and visualization environment MATLAB created by the MathWorks company established in 1984 is one of the most important systems of this kind all over the world. At present it belongs to standard software tools used both for educational and research purposes and it creates the integration environment for different research disciplines. Founders of the company Jack Little and Cleve Moler combined their expertise in mathematics, engineering, and computer science to develop MATLAB. During following years the environment has been extended by many toolboxes including latest possibilities of distributed computing. Detail information are available on address

[HTTP://WWW.MATHWORKS.COM](http://www.mathworks.com)
[HTTP://WWW.HUMUSOFT.CZ](http://www.humusoft.cz)

The communication between users of this system is able through the CSMUG discussion group (Czech and Slovak Matlab User Group) with detail information available on address

[HTTP://DSP.VSCHT.CZ/CSMUG_EN.HTML](http://dsp.vschtcz/csmug_en.html)

At present there is 176 registered members of this group belonging to 32 universities and research institutes. The most active of them include the Czech Technical University, Czech Academy of Sciences, Institute of Chemical Technology in Prague and the Charles University. Discussion is allowed for members only but it is possible to sign for anybody using web address

[HTTP://LISERV.VSCHT.CZ/MAILMAN/LISTINFO/CSMUG](http://liser.vschtcz/mailman/listinfo/csmug)

or sending an e-mail to csmug-subscribe@vscht.cz. It is possible to obtain further information sending e-mail to mailman-request@vscht.cz using command *help* in the message body. The communication between group members is possible sending questions and answers to address

csmug@vscht.cz

At the end it is necessary to express thanks to all active participants of the International Conference on Technical Computing Prague 2006 for their contributions.

Prof. Ing. Aleš Procházka, CSc
Department of Computing and Control Engineering ICT Prague

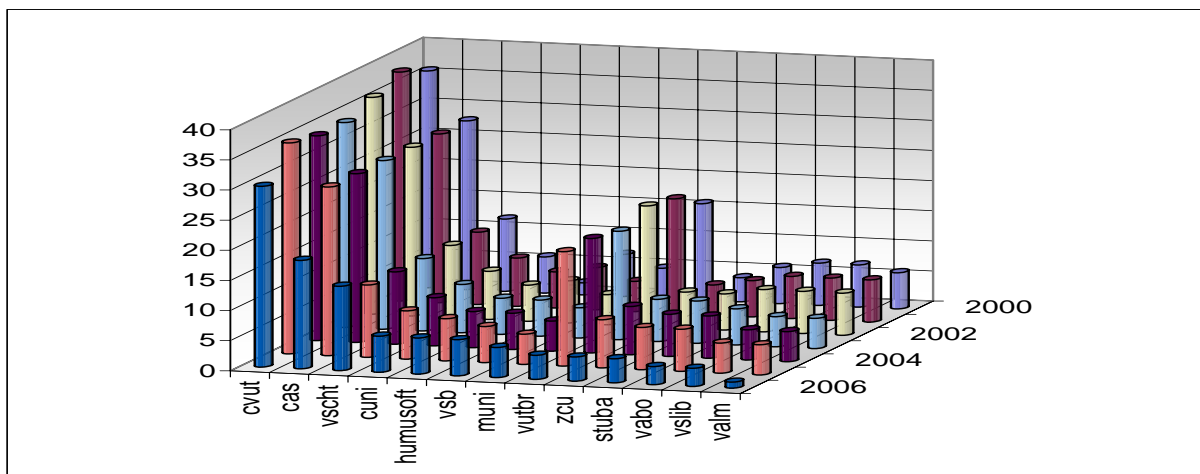


Figure 1: The development of the number of CSMUG members during the period from 2000 up to 2006 (developed by Ing. Aleš Pavelka, the master of the discussion group)