

# CONFERENCE TECHNICAL COMPUTING PRAGUE 2011

*A. Procházka, A. Pavelka*

Institute of Chemical Technology in Prague, Dept of Computing and Control Engineering

The programming and visualization environment MATLAB created by the MathWorks company established in 1984 is one of the most important mathematical computing systems all over the world. At present it belongs together with its toolboxes among standard software tools used both for educational and research purposes and it creates the integration environment for different research disciplines. Detail information are available on address

<http://www.MATHWORKS.com>  
<http://www.HUMUSOFT.cz>

The communication between users of this system is able through the CSMUG discussion group (Czech and Slovak Matlab User Group) with detail information available on address

<http://dsp.vscht.cz/csmug.cz.html>

At present there is 156 registered members of this group belonging to 28 universities and research institutes. The most active of them include the Czech Technical University, Czech Academy of Sciences, Institute of Chemical Technology in Prague and the Charles University. Discussion is allowed for members only but it is possible to sign for anybody using web address

<http://listserv.vscht.cz/mailman/listinfo/CSMUG>

The communication between group members is possible sending questions and answers to address

[csmug@vscht.cz](mailto:csmug@vscht.cz)

MATLAB users meet regularly on the international scientific conference with its present name *Technical Computing* to present results of research work and pedagogical activities using this environment. All contributions collected during last 12 years are available for anybody from the address of the discussion group. During the last period 69 090 papers have been successfully downloaded from this address with the time distribution of papers summarized in Tab. 1 and identification of the most frequently downloaded papers given in Tab. 2.

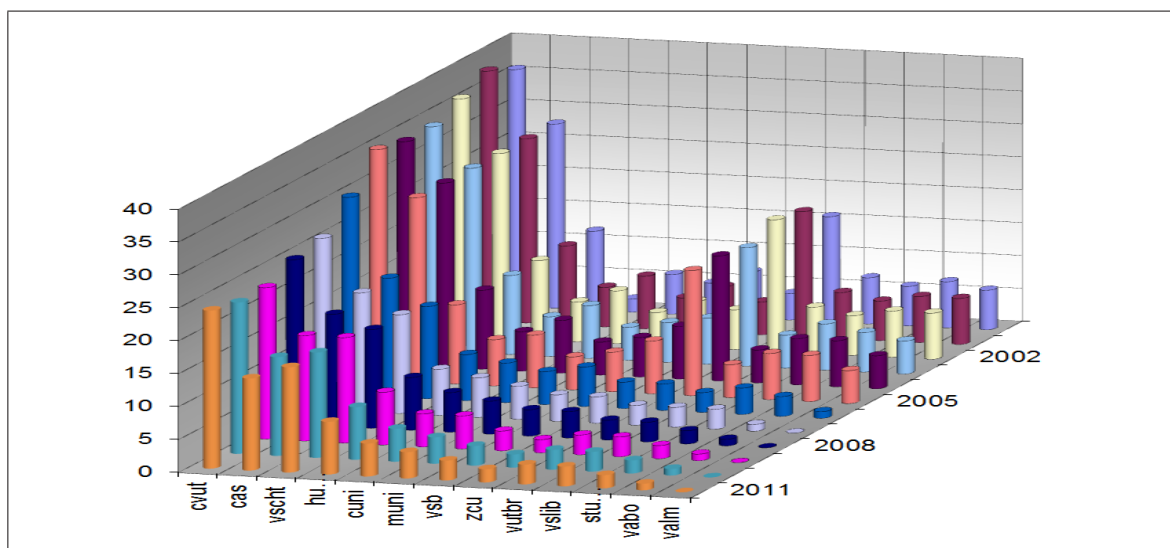


Figure 1: The development of the number of CSMUG members during years 2000 - 2011

Table 1: STATISTICS OF THE SUCCESSFULLY DOWNLOADED PAPERS FROM THE WWW SERVER OF THE CONFERENCE ON TECHNICAL COMPUTING DURING 1/10/2009 - 30/9/2011

<i>Year of the Conference</i>	<i>Number of Contributions in Conference Proceedings</i>	<i>Number of Papers Downloaded</i>
1999	42	1019
2000	67	3561
2001	70	2652
2002	105	3644
2003	105	4020
2004	100	4004
2005	128	9244
2006	108	7345
2007	129	9807
2008	113	8339
2009	111	9062
2010	102	6393
Sum	1180	69090

Table 2: SUMMARY OF THE MOST FREQUENTLY DOWNLOADED PAPERS FROM THE WWW SERVER OF THE CONFERENCE ON TECHNICAL COMPUTING

<i>Number of Downloads</i>	<i>Contribution</i>	<i>Number of Downloads</i>	<i>Contribution</i>
695	05/mudrova.pdf	361	08/057_kladivko.pdf
689	00/ondracka.pdf	327	09/021_didekova.pdf
681	07/kladivko_k.pdf	309	10/058_krulakova.pdf
648	05/pelant.pdf	303	06/bakosova_cirka1.pdf
627	09/043_huttl.pdf	301	06/marcek_milan2.pdf
468	06/vondrich_thondel.pdf	260	07/hoang_marvalova.pdf
468	06/hostalkova_prochazka.pdf	258	06/belavy2.pdf
466	04/kratochvil.pdf	239	09/118_zavadinka.pdf
449	07/maly_rajmic.pdf	238	08/049_chalupa.pdf
385	09/015_bakosova.pdf	238	08/048_hrncar.pdf
380	07/jedlicka_potuckova.pdf	238	07/kofranek_rusz.pdf
370	05/brandt.pdf	228	07/hulko_noga.pdf
367	07/chvostek_kratky.pdf	222	05/ondera.pdf

At the end it is necessary to express thanks to all active participants of the International Conference on Technical Computing Prague 2011 for contributions presenting their research and educational work. Special thanks belongs also to the HUMUSOFT company representing the MathWorks Company in the Middle Europe for regular organization of conferences devoted to the interdisciplinary MATLAB computing environment.